



17, Woodlands Avenue, Stone, ST15 0DT



**Asking Price £220,000**

An exceptional value for money semi for those on you willing to invest a little time, money and elbow grease! This attractive bay-fronted semi has been thoughtfully extended and adapted, offering more flexibility than most homes of its type. The ground floor features a double bedroom, while upstairs the former third bedroom has been converted to create an en-suite for the main bedroom. The layout could easily be reinstated to its original three-bedroom design, or the ground floor extension offers an excellent opportunity to reconfigure into a large, open wrap-around kitchen/dining/living space – a popular choice for modern family living. The property benefits from off-road parking, gas-fired central heating, and uPVC double-glazed windows, and occupies a good-sized plot with private, mature gardens to both the front and rear. Well maintained and attractively presented throughout, the house still provides scope for new owners to place their own mark. Situated in a popular residential area on the outskirts of Stone, within walking distance of the town centre, local shops, and schools. Offered for sale with no upward chain.



01785 811 800

<https://www.tgprop.co.uk>





#### Entrance Hall

A spacious reception area which has a upvc part glazed front door and window to the side of the house, stairs to the first floor landing with storage cupboard below. Wood effect flooring. Radiator.

#### Sitting Room

Bay window to the front of the house, chimney breast with brick built fireplace, slate hearth and living flame gas fire. Arched display niches to the chimney alcoves. Wood effect floor. Radiator.

#### Lounge / Dining Room

A good size living space which is extended to the rear and has space for both living and dining. Chimney breast with stone built fireplace, slate hearth and living flame gas fire. Rear facing window overlooking the garden. Two radiators.

#### Ground Floor Bedroom

A useful ground floor double bedroom which could easily be utilised as a further reception room or adapted further to create a large open plan living / dining / kitchen. Fitted wardrobes and dressing table to one wall. Wood effect floor. Radiator.

#### Kitchen

Traditional galley style kitchen which features an extensive range of wall and base cupboards with traditional style wooden cabinet doors and coordinating granite effect work surfaces with inset sink unit. Slot-in gas cooker and plumbing for washing machine. Tile effect flooring. Window and door to the side of the house. Radiator.

#### Landing

Window to the side of the house.

#### Bedroom 1

Double bedroom with bay window to the front of the house. Built-in wardrobes to one wall. Radiator.

#### En-Suite

Suite comprising; corner quadrant shower enclosure, vanity basin & WC. Window to the front of the house. Radiator.

#### Bedroom 2

Double bedroom with window to the rear of the house. Fitted wardrobes to one wall. Radiator.

#### Bathroom

Fitted with a white modern suite comprising; bath with glass shower screen and shower over, pedestal basin & WC. Part ceramic tiled walls and tile effect floor. Rear facing window. Radiator.

#### Outside

The house occupies a good size plot, set back from the road with driveway parking for 2 cars and a detached pre-cast single

garage. Hard landscaped front garden with dwarf boundary wall and raised planted borders. To the rear there is an enclosed garden which is hard landscaped for ease of maintenance, featuring several patio areas and raised planted borders.

#### General Information

Services; Mains gas, water, electricity & drainage. Gas central heating.

Tenure; Freehold

Council Tax Band C

Viewing by appointment

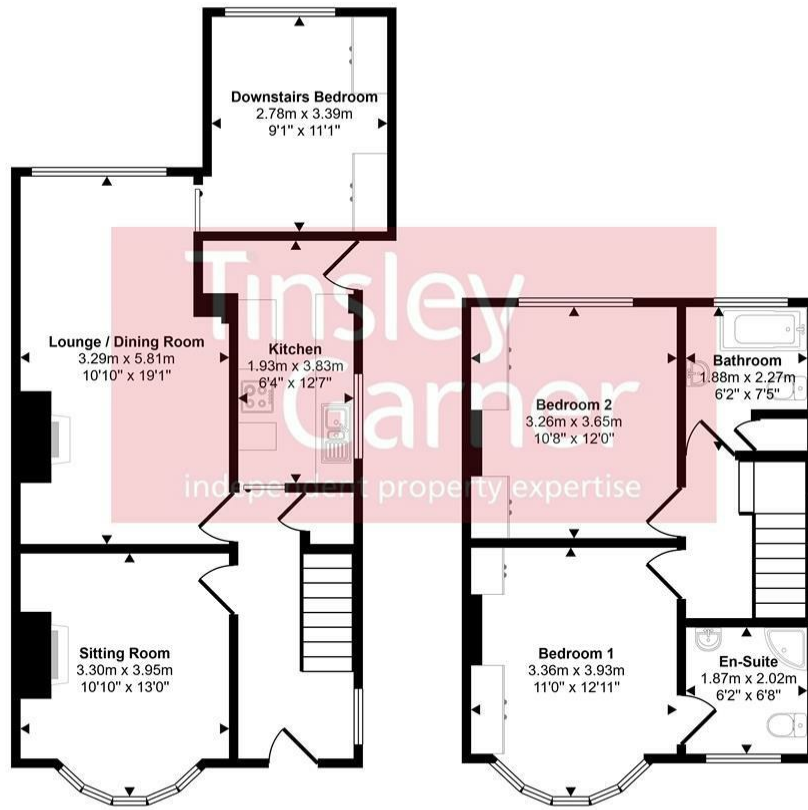
For sale by private treaty, subject to contract.

Vacant possession on completion





Approx Gross Internal Area  
96 sq m / 1033 sq ft



Ground Floor  
Approx 57 sq m / 616 sq ft

First Floor  
Approx 39 sq m / 417 sq ft

This floorplan is only for illustrative purposes and is not to scale. Measurements of rooms, doors, windows, and any items are approximate and no responsibility is taken for any error, omission or mis-statement. Icons of items such as bathroom suites are representations only and may not look like the real items. Made with Made Snappy 360.

